

# Solutran G<sup>®</sup>

*Medical PVC for container for  
draining, feeding...*

## Solutran G<sup>®</sup> PVC GRANULE

Solutran G<sup>®</sup> is one of the specialisation of Meditalia Srl in the production of granules, tubulars and tubes in non-toxic medical biocompatible PVC for the making of tubulars with the specific “satin-finish” and “embossed” texture, suitable to guarantee on extrusion a collapse-resistant effect of the surfaces.

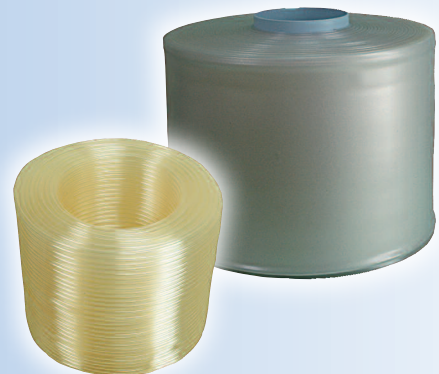
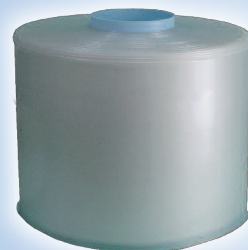
Solutran G<sup>®</sup>, made both with DOP plasticizer and in the phthalate-free formula, is to be used in the draining and feeding sectors as well as for the collection of body liquids of a different nature or where the need is a collapse-resistant effect of the contact surfaces.

## Solutran G<sup>®</sup> PVC LAY FLAT TUBE, DOUBLE WOUND FLAT FILM AND TUBE

Solutran G<sup>®</sup> tubulars featuring specific “satin-finish” and “embossed” textures guarantee a notable “anti-blocking” and “anti-sticking” effect, that is the collapse-resistant effect of the contact surfaces, while still maintaining optimal flexibility characteristics and high-performance workability features.

**Produced in customized thickness and widths on market demand**, they are used in the production of draining bags, in the feeding sector, in the collection of body liquids of a different nature thanks to their flexibility and at the same time to their resistance and seal.

They are also used in various applications in which the need is the sterilization of the empty bag or an easy filling of the same (by gravity or mechanically).



# Solutran G<sup>®</sup>

## Technical sheet

Medical grade PVC granule - lay flat tube - double wound flat film - tube - container for draining, feeding...

### CHEMICAL SPECIFICATIONS Eur. Ph. Sez. 3.1.1.1

#### FORMULATION

Poly(vinyl chloride)	> 55%
Plasticizer (DOP or DOP free)	< 40%
Epoxidised soya oil	< 5%
N,N'-diacylethylenediamines	< 1%
Calcium stearate	< 1%

#### TEST

#### LIMIT VALUE

Vinyl chloride	1,0 ppm
Appearance	Clear, colourless
Alkalinity	1,0 ml HCl 0.01 M
Acidity	1,5 ml NaOH 0.01 M
Reducing substances	2,0 ml Na <sub>2</sub> S <sub>2</sub> O <sub>3</sub> 0.01 M
UV absorption	0,25 250-310nm
Residue on evaporation	0,3%
Barium	5,0 ppm
Cadmium	0,6 ppm
Heavy metals	50,0 ppm
Calcium	0,07%
Tin	20,0 ppm
Zinc	0,2%

Small color differences depend only on the color tone of the resin

### PHYSICAL PROPERTIES

#### Typical test results on 70 ShA tubular

TEST	VALUE	UNIT	REFEREN.
Appearance	White Omogeneous Granule		
	Embossed Texture (film)		
	Santined Appearance (film)		
	Natural colour (film)		
	Contamination free		
	Burned Point free		
Hardness	70	Shore A	ISO 868
Tensile strenght at break	150	Kg/cm2	ISO R527
Elongation at break	320	%	ISO R527
Temperature of stiffening	-15	°C	ISO R458
Density	1,21	g/cm3	ISO R1183

### BIOLOGICAL REACTIVITY UNI EN ISO 10993

TEST	IN CONFORMITY
Irritation	Yes
Cytotoxicity	Yes
Implantation	Yes
Hemolysis	Yes
Systemic toxicity	Yes